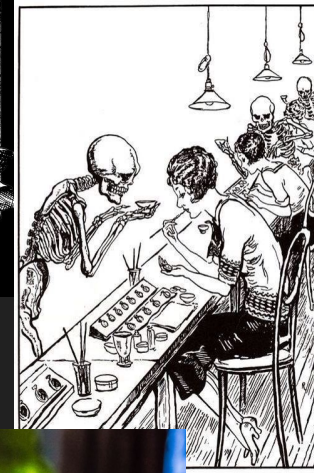
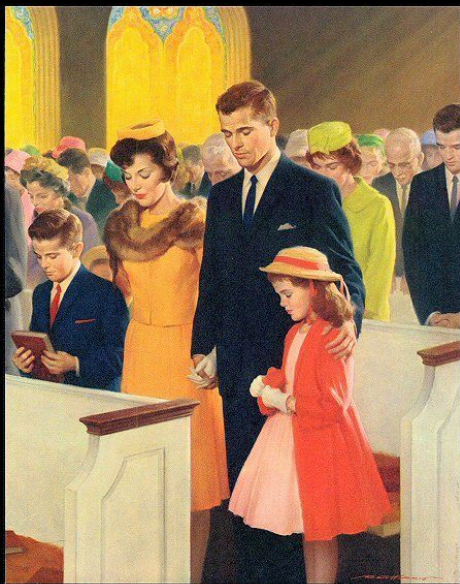


Evocative Images



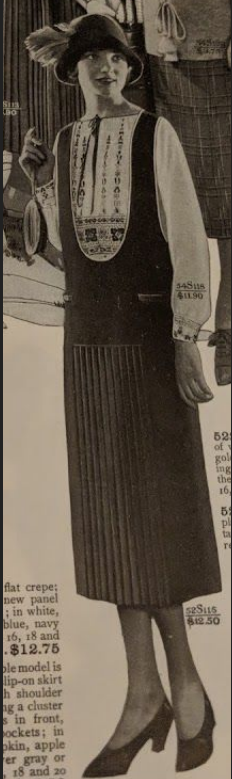
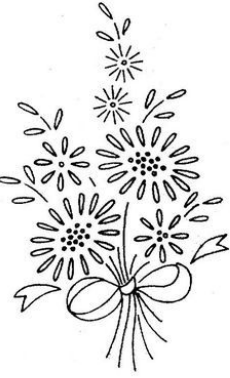


Color Palette



Catherine Donohue

Dainty Apron Design Which Can Be Embroidered Quickly



Pearl



Frances

9D1928

All Wool Novelty Stripes 9D1128 \$4.98

9D1128 Cord \$2.1500
9D1128 Stripes \$4.98

Wash to be worn with white collar and cuffs. This dress is made of a fine quality of wool and is very comfortable to wear. It is a very stylish dress and is very popular.

9D1128

9D1128

9D1128

9D1128

9D1128

9D1128

9D1128

9D1128

9D1128

9D1128

9D1128

9D1128

9D1128

9D1128

9D1128

9D1128

9D1128

9D1128

9D1128

9D1128

9D1128

9D1128

9D1128

9D1128

9D1128

9D1128

9D1128

9D1128

9D1128

9D1128

9D1128

9D1128

9D1128

9D1128

9D1128

9D1128

9D1128

9D1128

9D1128

9D1128

9D1128

9D1128

9D1128

9D1128

9D1128

9D1128

9D1128

9D1128

9D1128

9D1128

9D1128

9D1128

9D1128

9D1128

9D1128

9D1128

9D1128

9D1128

9D1128

9D1128

9D1128

9D1128

9D1128

9D1128

9D1128

9D1128

9D1128

9D1128

9D1128

9D1128

9D1128

9D1128

9D1128

9D1128

9D1128

9D1128

9D1128

9D1128

9D1128

9D1128

9D1128

9D1128

9D1128

9D1128

9D1128

9D1128



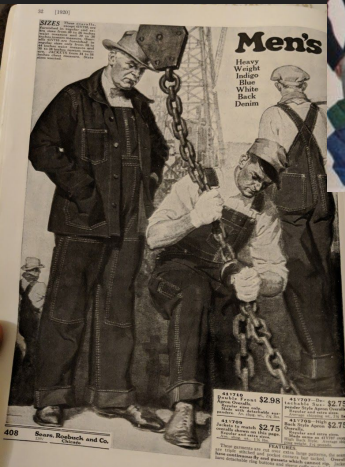
Charlotte



Aprons



Tom



Leonard Grossman-

BOW TIES



55c 33V8410
EACH Extra Quality
Fancy Pattern
Bat Wing Bow Tie.
To be tied by wearer.
Colors: Navy blue, light
blue, red, brown, pur-
ple, gray, lavender,
green or fancy black.
State color.



55c 33V8422
EACH Easy colors
Graduated
End Bow Tie
in fancy patterns. To be
tied by the wearer. Tie is
1 1/4 inches wide at end.
Colors: Navy blue, light
blue, red, brown, gray, la-
vender, purple, green, or
fancy black. State color.



39c 33V8430—Full Dress
FOR TWO White Bow Ties. Fine
quality white cambric.
Packed two in box.



35c 33V8412
EACH Easy colors.
Bat Wing Bow
Tie in plain colors.
To be tied by the
wearer. Colors:
Navy blue, light
blue, red, brown,
purple, lavender, green,
or fancy black. State color.



55c 33V8425—Polka Dot
EACH Bat Wing Bow Tie. As-
sorted size dots. Very
neat and stylish. To be tied by
wearer. Navy blue with white
dots only.



35c 33V8413—Bat Wing Style Bow Tie
EACH in fancy patterns. To be tied by wearer. Colors:
Navy blue, light blue, red, brown, gray,
purple, lavender, fancy black or green.
State color.

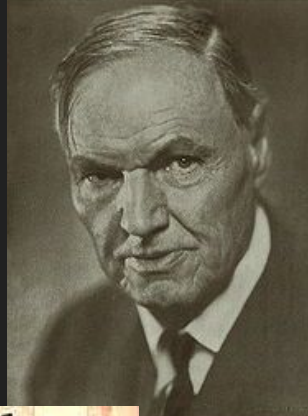
**New Smart Styles
Unequaled Low Prices**



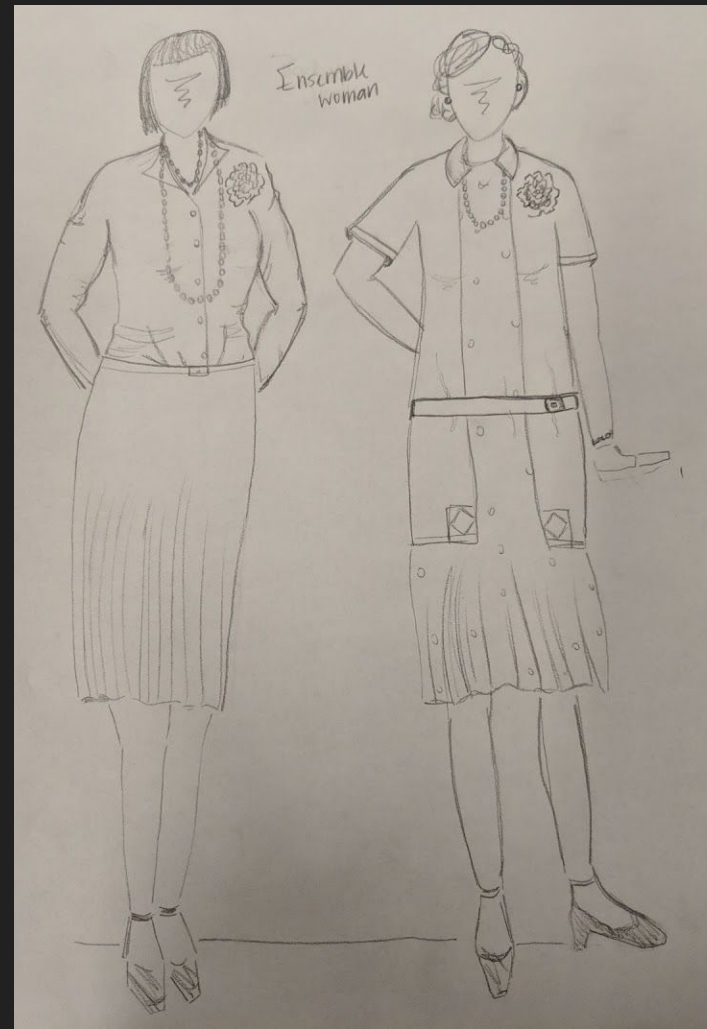
The Princeton
The Princeton suit is made of the finest materials and is a true masterpiece of tailoring. It features a sharp, well-defined collar and a perfectly fitted jacket. The trousers are also of high quality and are made to order. This suit is a true statement of style and class.



The New Yorker
The New Yorker suit is a true masterpiece of tailoring. It features a sharp, well-defined collar and a perfectly fitted jacket. The trousers are also of high quality and are made to order. This suit is a true statement of style and class.



Backup Singers



Radio Announcer

[illegible]

Company Doctor/Dr. Dalitsch



Reporters and Judge

